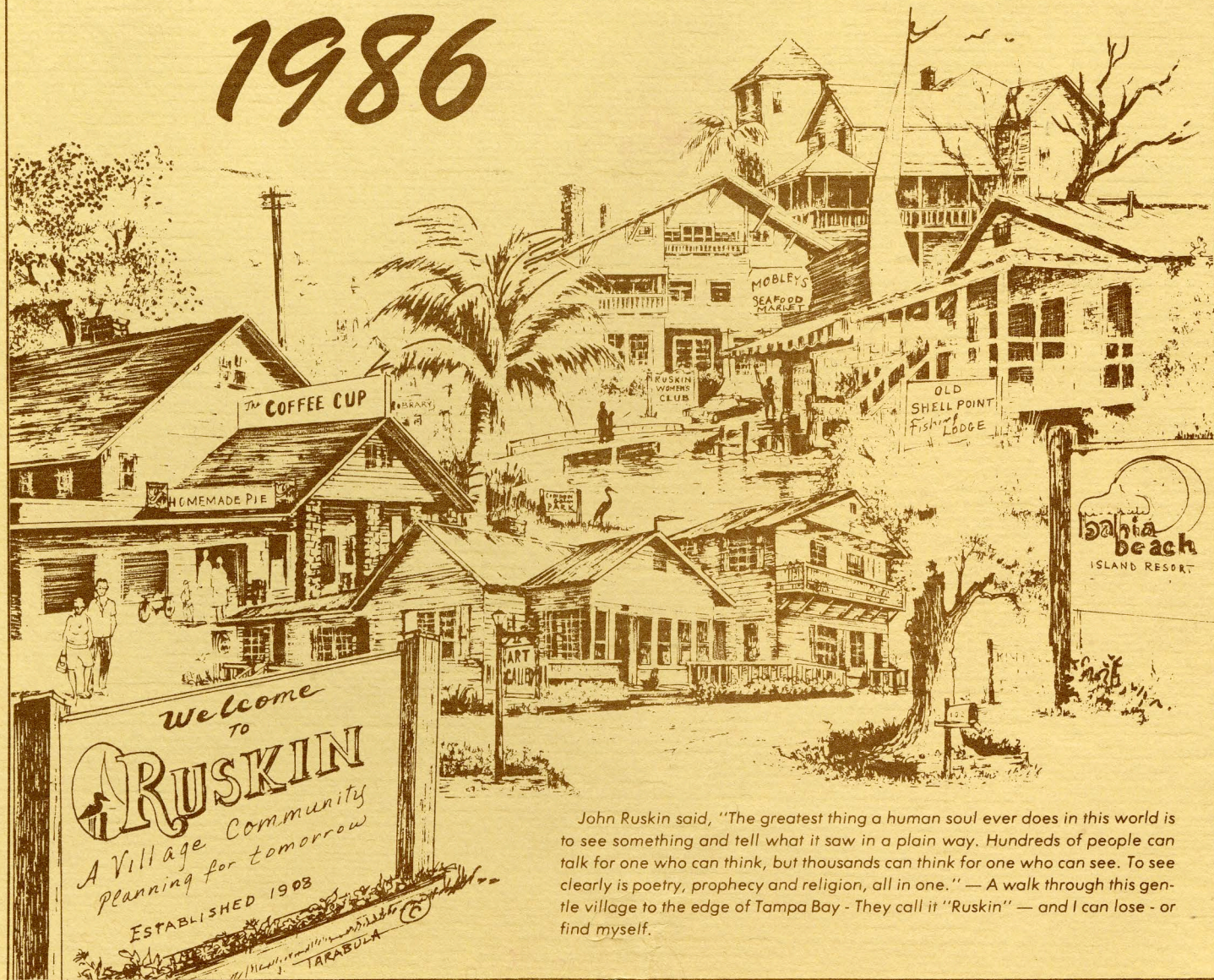


1986



John Ruskin said, "The greatest thing a human soul ever does in this world is to see something and tell what it saw in a plain way. Hundreds of people can talk for one who can think, but thousands can think for one who can see. To see clearly is poetry, prophecy and religion, all in one." — A walk through this gentle village to the edge of Tampa Bay - They call it "Ruskin" — and I can lose - or find myself.

RUSKIN

Established 1908

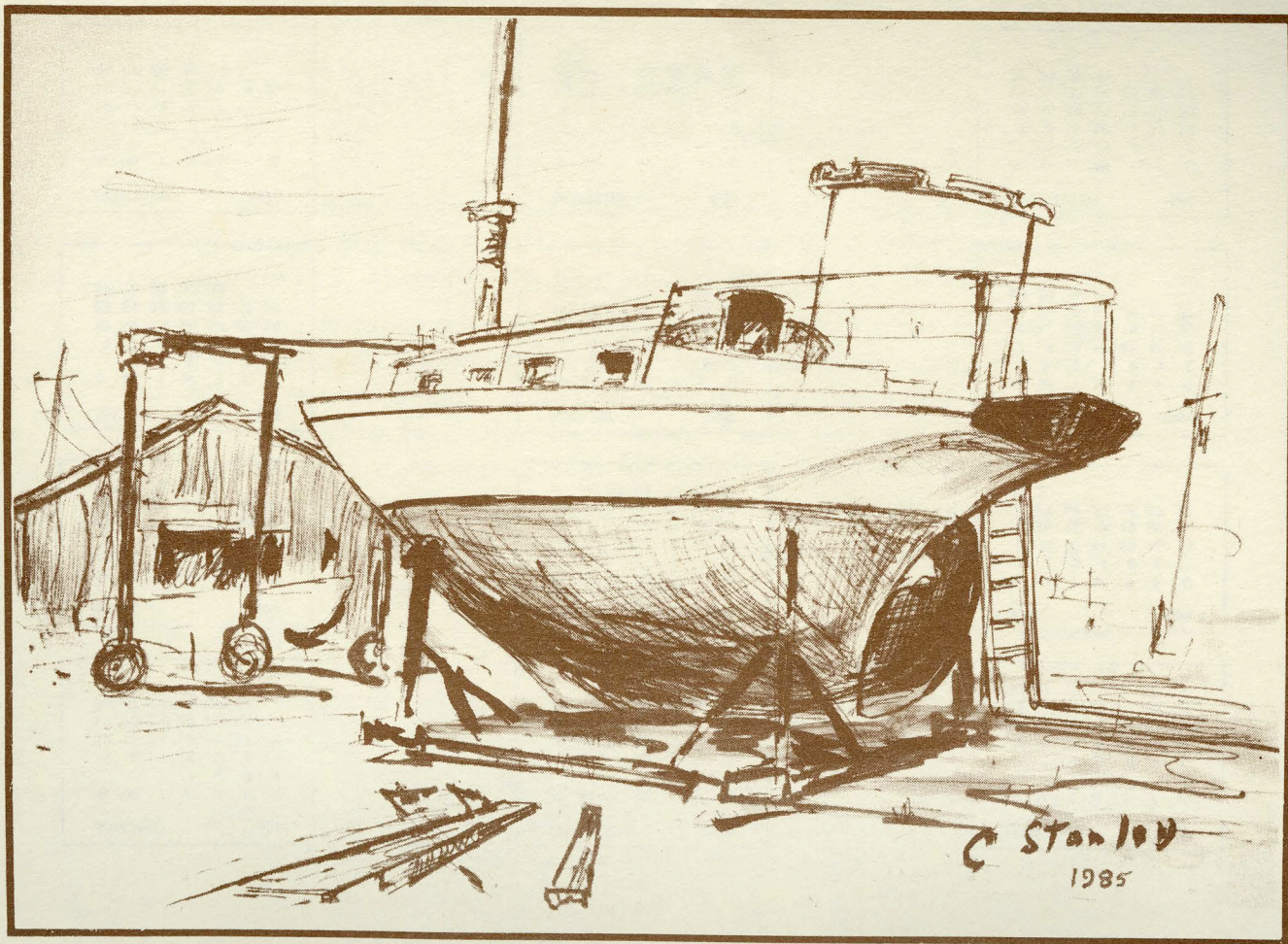
This unincorporated community is clustered along the east shore of Tampa Bay about halfway between Tampa and Sarasota. It lies astride U.S. 41 and is just west of Interstate 75.

Early families such as Miller, Dickman and Buzbee settled near the river and began to farm. Now large crops of tomatoes, strawberries, melons, onions, corn and peppers are harvested by migrant workers. Orange groves and flower farms perfume the air each spring and are harvested later for export or local markets.

Slender mullet boats glide thorough inland brackish water and local fishermen pull up crab traps or a variety of fish such as bass, trout, sheephead, crappie and snook.

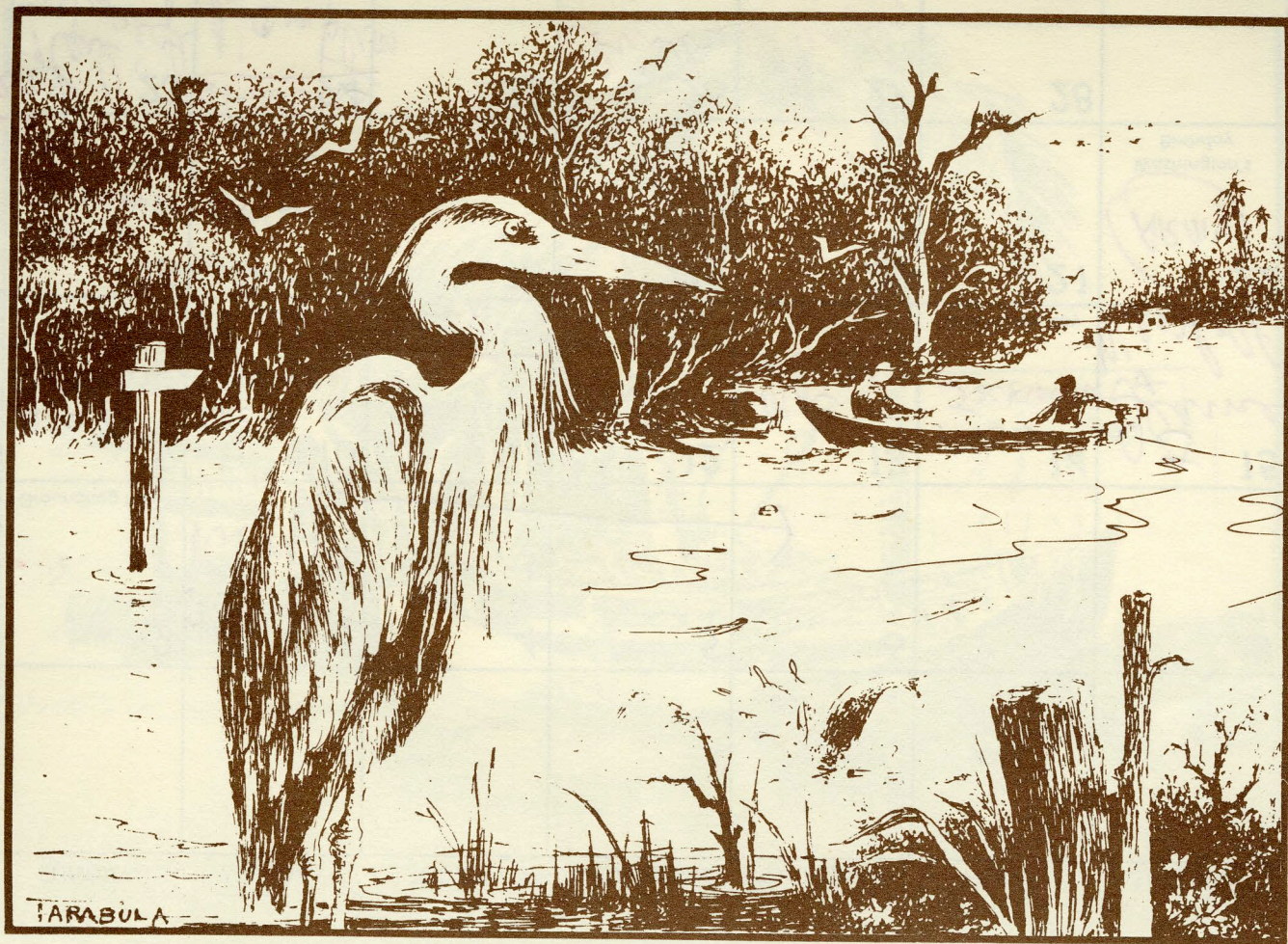
Little Manatee River winds through the center of Ruskin, around mangrove islands where osprey, herons, and egrets nest. One of these islands has been developed into a resort area with a marina. It is called Bahia Beach Island Resort.

Winter residents and tourists are attracted to the "small town" atmosphere of Ruskin where they can still be close enough to take in the attractions of Tampa, Bradenton and Sarasota.

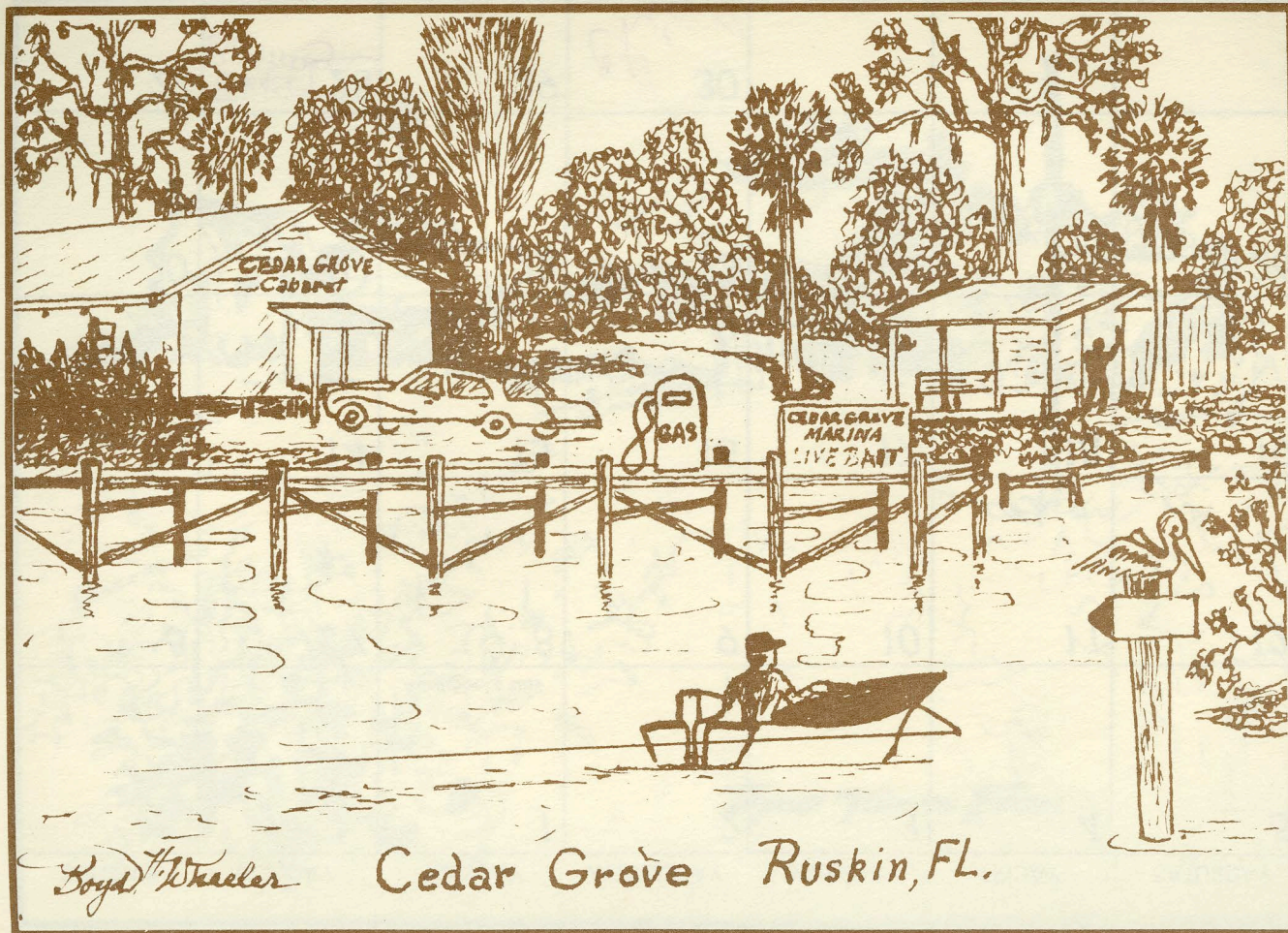




BANQUET ENTRANCE. BAHIA BEACH RESORT. RUSKIN, FL.

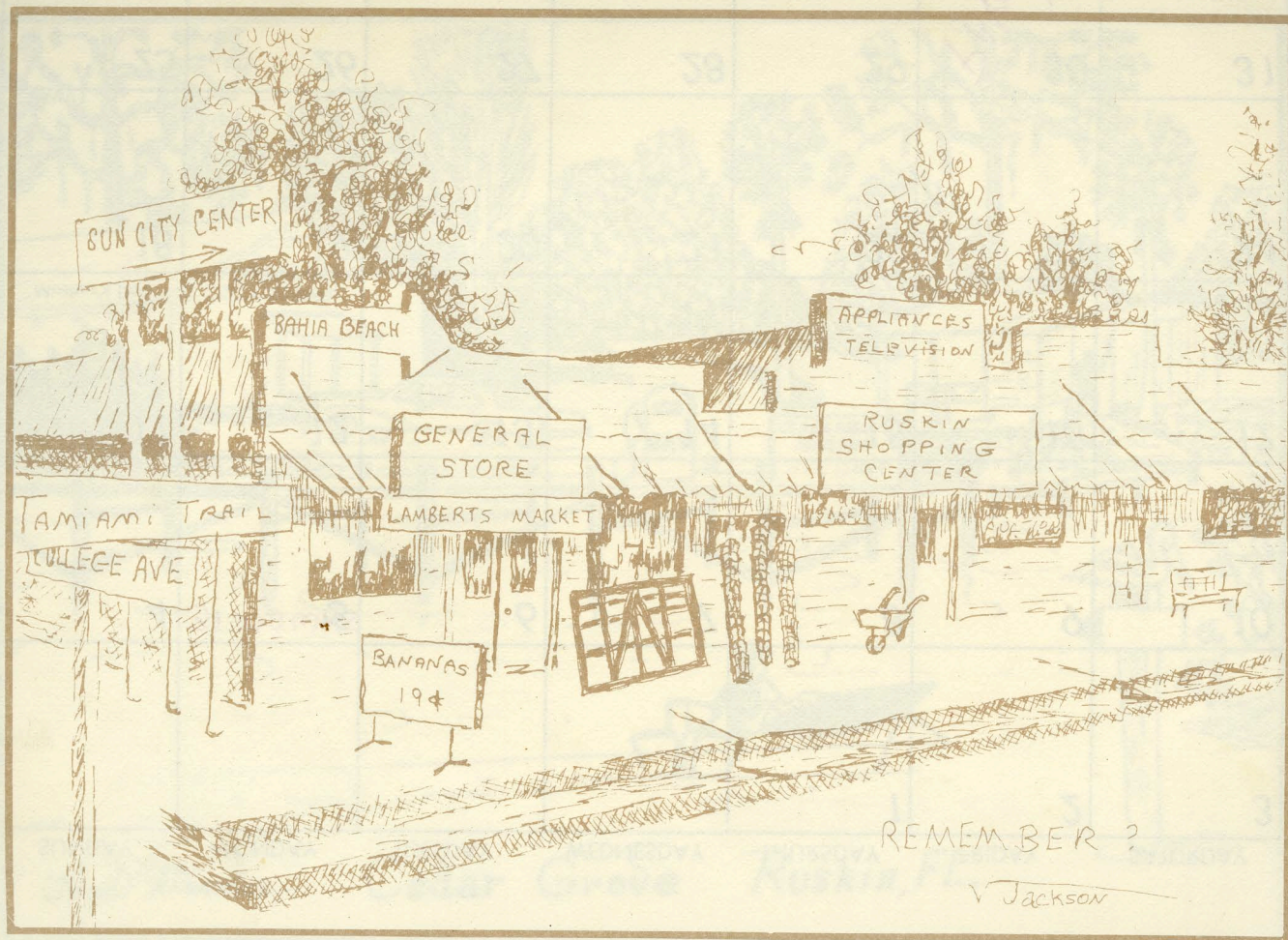






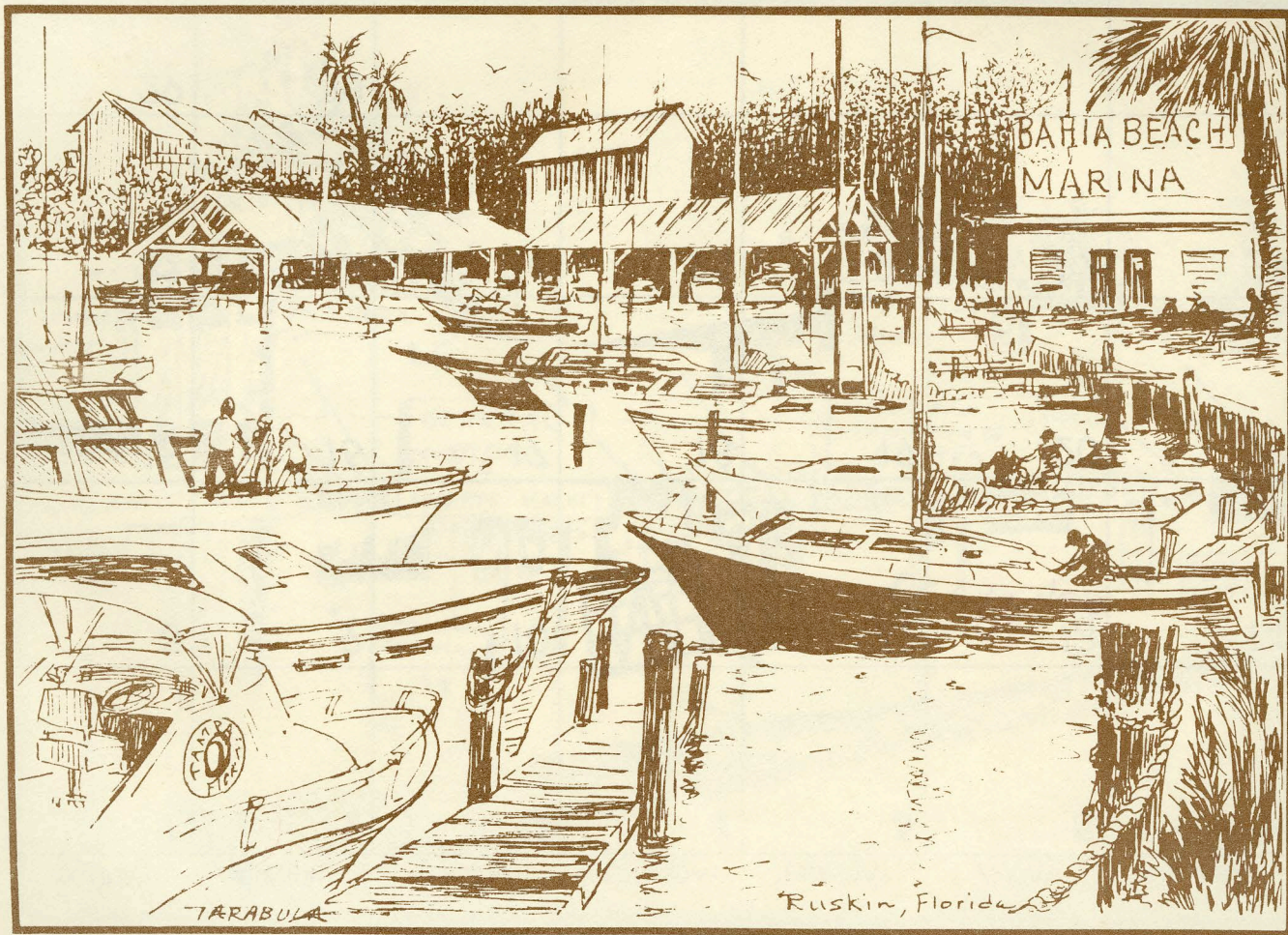
Boyd Wheeler

Cedar Grove Ruskin, FL.



REMEMBER ?

V Jackson



TARABULA

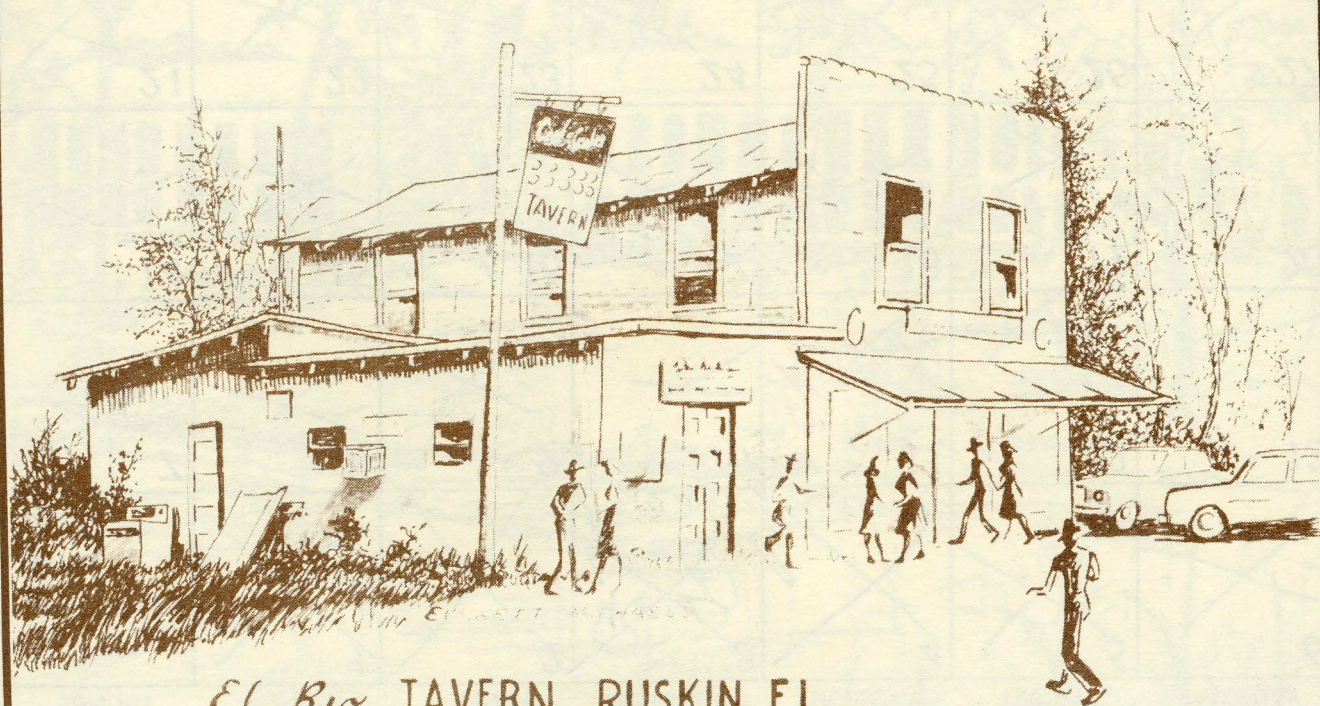
Ruskin, Florida



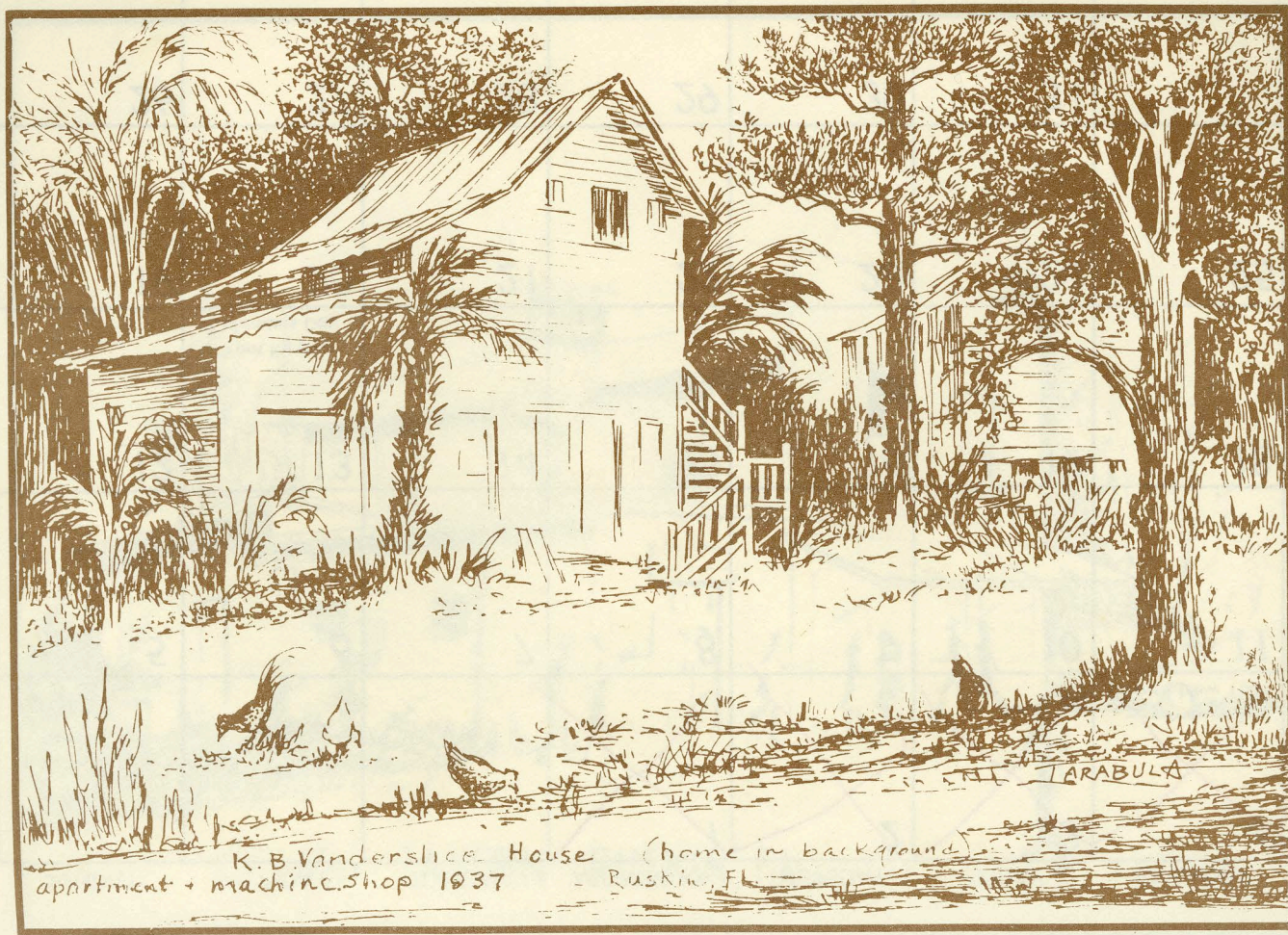
The Shopper Observer News

CORNER OF SHELL POINT Rd. & 1ST ST NE. RUSKIN FL.

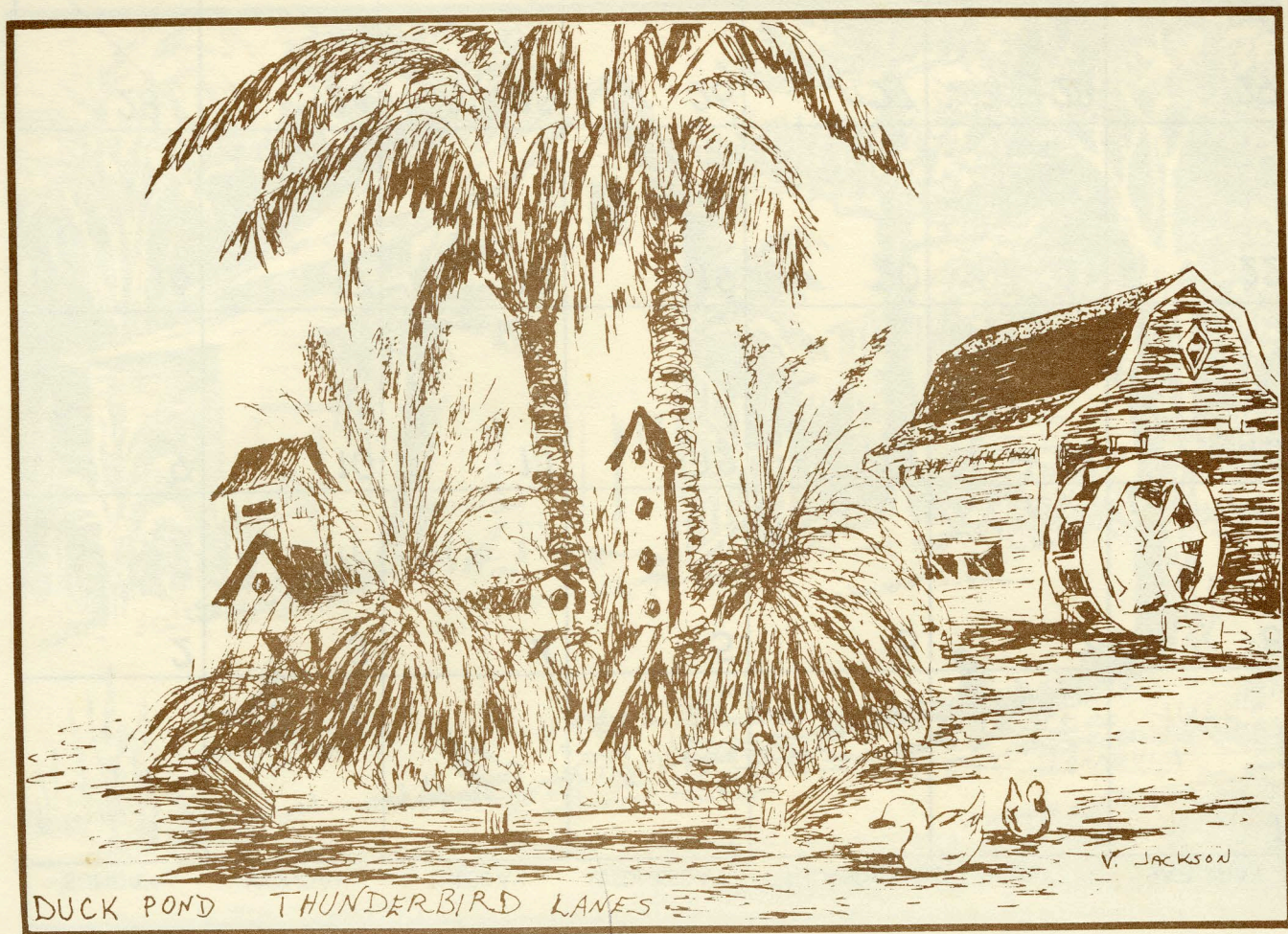




El Rio TAVERN. RUSKIN, FL.



K.B. Vanderslice House (home in background)
apartment + machine shop 1937 - Ruskin, FL



DUCK POND THUNDERBIRD LANES

V. JACKSON

MONDAY 1889

The League of Creative Arts sponsors this calendar to share some of the local scenes of interest. Members contributing artwork are: Velma Jackson, Grace McKee, Everett Michaels, Sue DiGioia, Boyd Wheeler, Charles Stanley — and Jo Tarabula.

Additional calendars may be purchased.

Write: League of Creative Arts
102 W. Shell Point Road
Ruskin, Florida 33570