

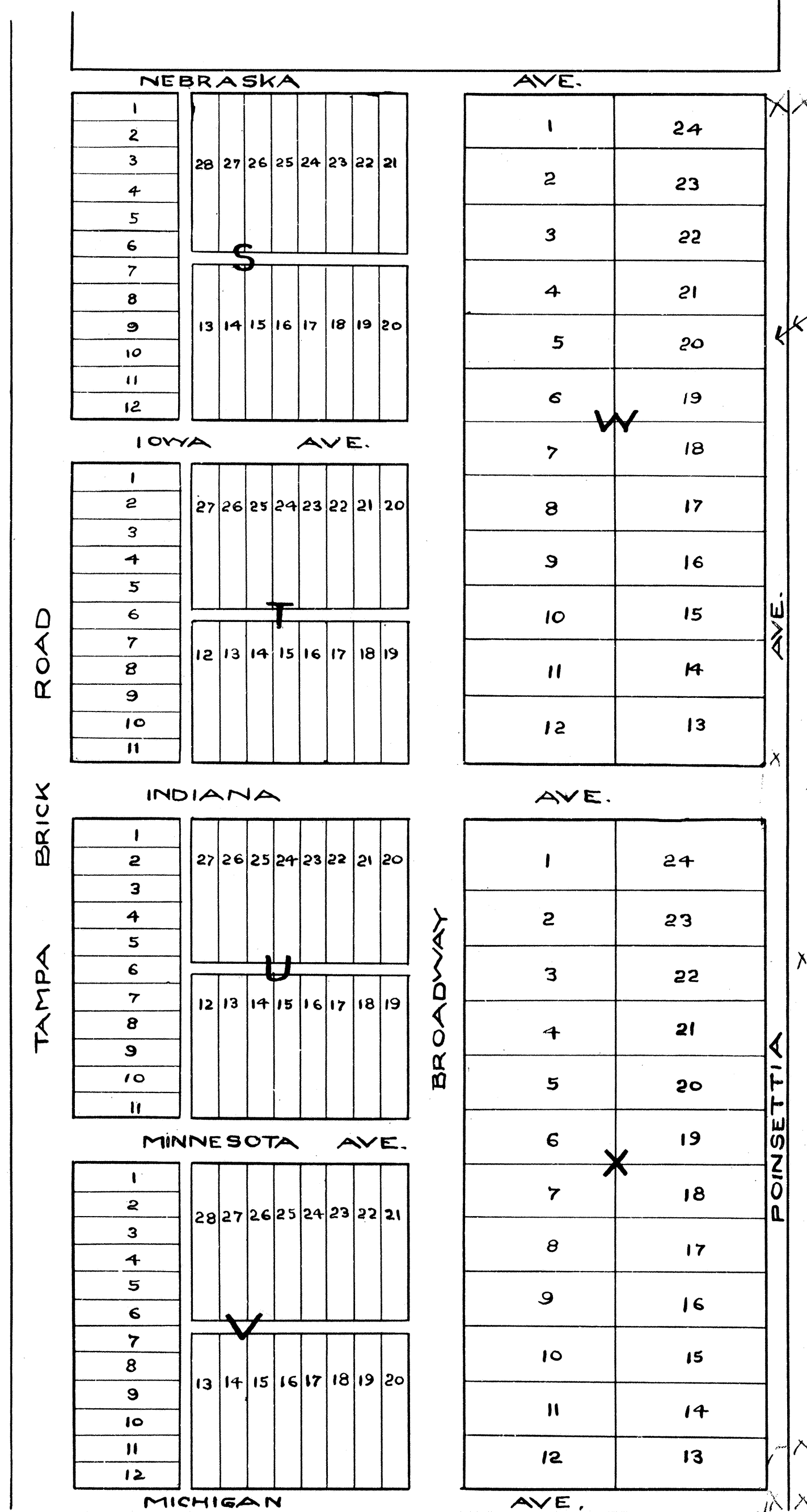
RIVERVIEW HEIGHTS

RIVERVIEW FLA.

W 1/2, S.W. 1/4 OF N.E. 1/4, S. 17-T. 30.S-R 20E.

SCALE 100' = 1"

MARCH 1920



*For Ad Clause see Co. Com. min. 184.
34 dated 6-22-61*

*Filed for record
July 30th 1920
And the Record Verified
W. P. Culbreath Clk. Co. Co.
By Frances M. Toland D. C.*

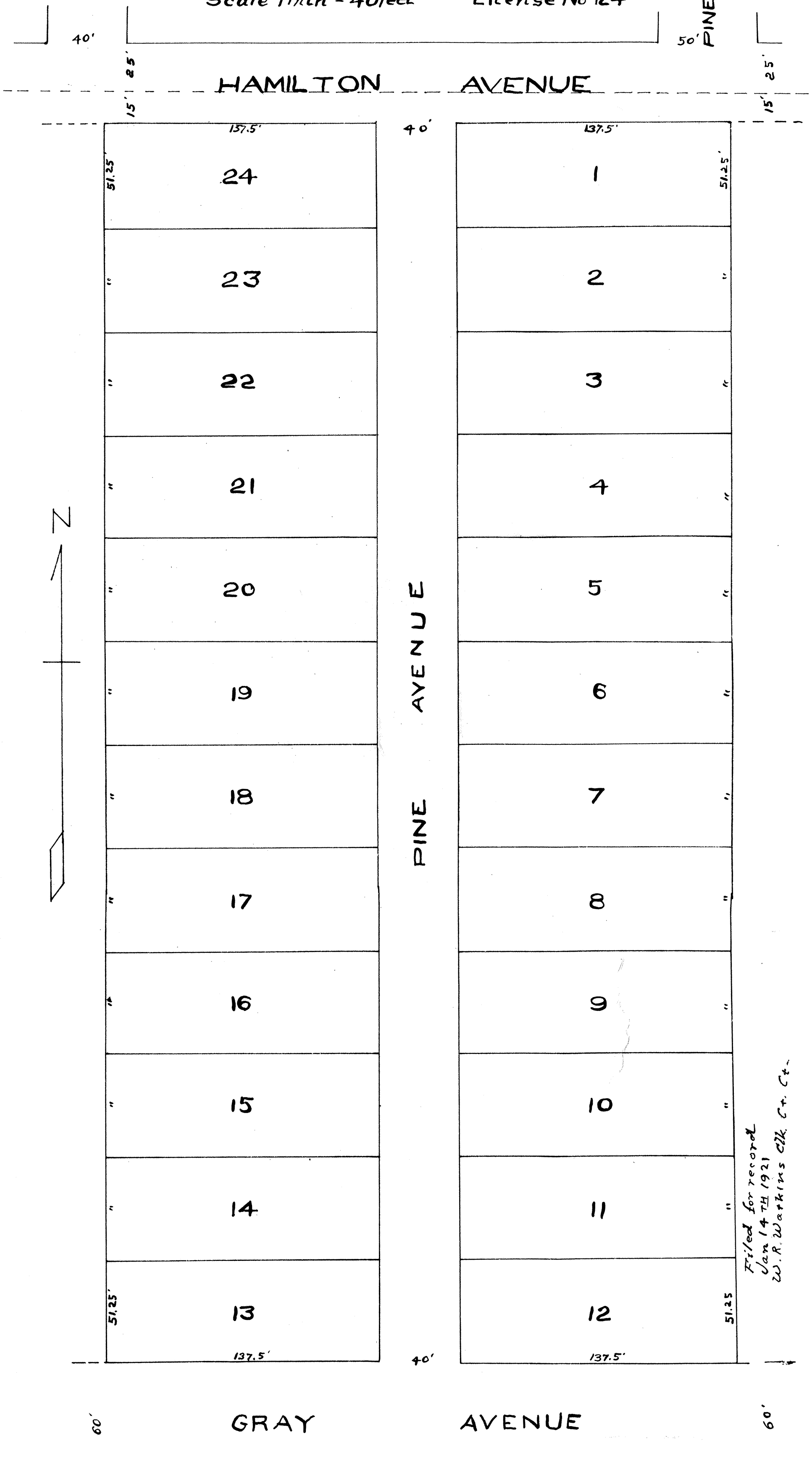
Book 9 1937

PINECREST

A Subdivision of Lot 8 Block 1 of
WOODHAVEN SUBDIVISION
as recorded in Plat Book 2 Page 33
records of Hillsborough County Florida
March 1920
Scale 1 inch = 40 feet

We the undersigned
authorize the Recording
of the foregoing Map
J. P. Hamilton
J. E. Huntley
James Young
R. De Haven

B.M. Sullivan.
License No 124



STATE OF FLORIDA
COUNTY OF HILLSBOROUGH
THIS IS TO CERTIFY THAT THIS PLAT IS A
TRUE AND CORRECT COPY THAT HAS BEEN
PHOTOGRAPHICALLY RE-CREATED FROM THE
ORIGINAL PLAT AND THE PHOTOGRAPHIC
REPRODUCTION HAS BEEN RETOUCHEE AS
NECESSARY TO CONFORM THE COPY TO THE
ORIGINAL PLAT DRAWING OR TRACING THEREOF
RECORDED BY THE CLERK OF CIRCUIT COURT
OF HILLSBOROUGH COUNTY, FLORIDA. THE
ORIGINAL PLAT HAS BEEN PRESERVED AND IS
AVAILABLE FOR EXAMINATION UPON REQUEST

RECORD VERIFIED.
WITNESS MY HAND AND OFFICIAL SEAL THIS
4 DAY OF February, 19 27
RICHARD AXE, CLERK
BY *Richard M. Lee* DEPUTY CLERK



*Filed for record
Jan 14th 1921
W. A. Watkins Clk. Co. Co.*